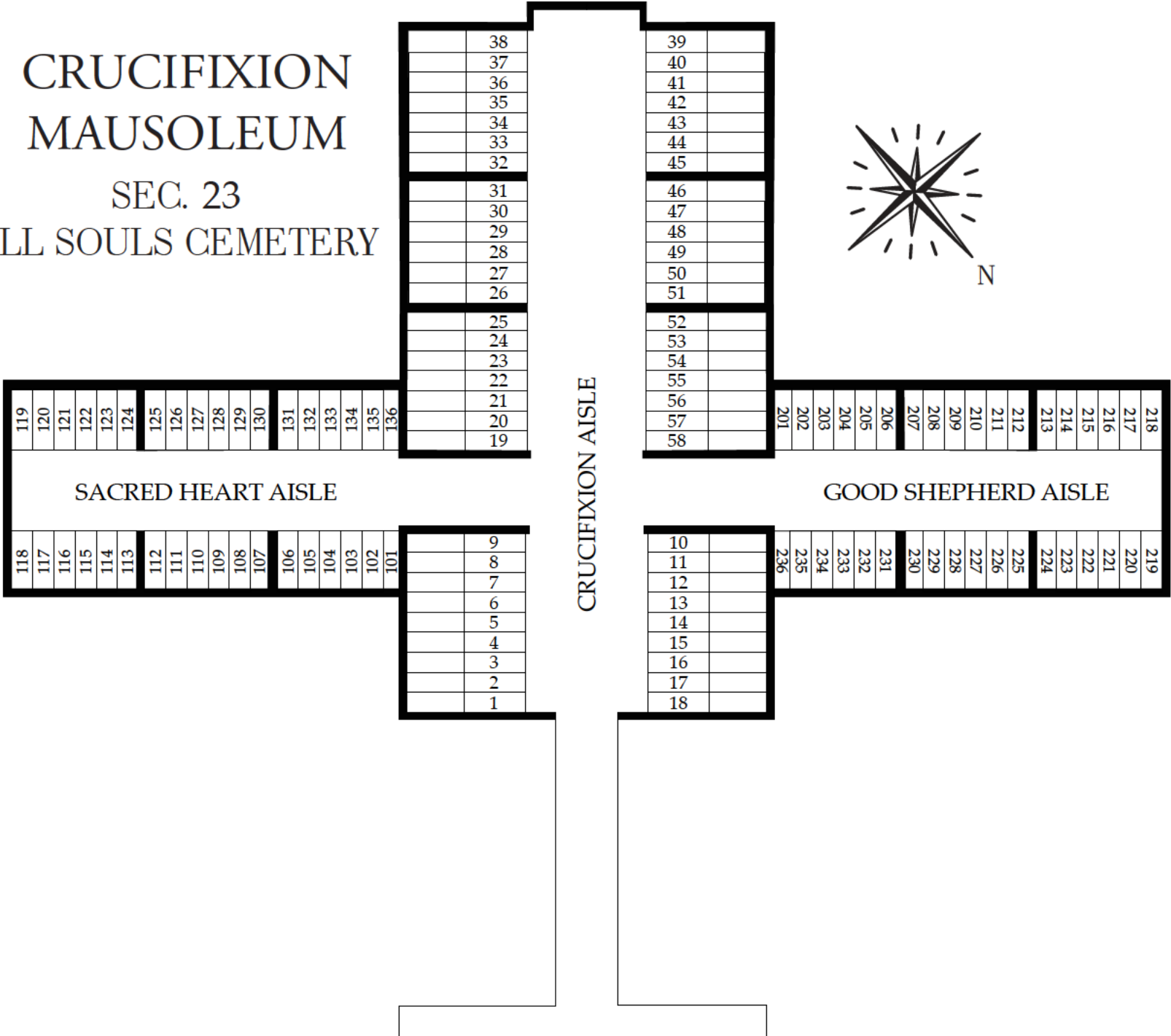


CRUCIFIXION
 MAUSOLEUM
 SEC. 23
 ALL SOULS CEMETERY



NOTE:

ALL NICHES ARE DESIGNATED AND LOCATED BY ROW NUMBER AND TIER LETTER IN THEIR RESPECTIVE AISLE.

ALL DOUBLE NICHES ARE TO BE NUMBERED AS INDICATED.

DIMENSIONS OF DOUBLE NICHES ARE:
INTERIOR: 15 1/16" x 12 5/16"
CLEAR OPENING: 13 7/16" x 10 11/16"

DIMENSIONS OF SINGLE NICHES ARE:
INTERIOR: 10 1/16" x 12 5/16"
CLEAR OPENING: 8 7/16" x 10 11/16"

ALL NICHES ARE 11 7/8" INSIDE DEPTH

SUMMARY: 98 SINGLE NICHES
48 DOUBLE NICHES
 146 TOTAL UNITS

ALL URNS ARE NOT TO EXCEED INTERIOR DIMENSIONS OF DOUBLE OR SINGLE NICHES AS LISTED ABOVE.

		303H	305H	306H	308H		310H	312H	313H	315H															
		303G	305G	306G	308G		310G	312G	313G	315G															
		303F	305F	306F	308F		310F	312F	313F	315F															
		303E	305E	306E	308E		310E	312E	313E	315E															
		303D	305D	306D	308D		310D	312D	313D	315D															
		303C	305C	306C	308C		310C	312C	313C	315C															

J
I
H
G
F
E
D
C
B
A

301	302	303	304	305	306	307	308	309	310	311	312	313	314	315	316	317
-----	-----	-----	-----	-----	-----	-----	-----	-----	-----	-----	-----	-----	-----	-----	-----	-----

SOUTHEAST AISLE

ALL SOULS CEMETERY
 CHARDON, OHIO
 CRUCIFIXION GARDEN CRYPT
SOUTHEAST AISLE COLUMBARIUM

NOT TO SCALE J.G. APRIL 5, 1999

NOTE:

ALL NICHEs ARE DESIGNATED AND LOCATED BY ROW NUMBER AND TIER LETTER IN THEIR RESPECTIVE AISLE.

ALL DOUBLE NICHEs ARE TO BE NUMBERED AS INDICATED.

DIMENSIONS OF DOUBLE NICHEs ARE:
INTERIOR: 15 1/16" x 12 5/16"
CLEAR OPENING: 13 7/16" x 10 11/16"

DIMENSIONS OF SINGLE NICHEs ARE:
INTERIOR: 10 1/16" x 12 5/16"
CLEAR OPENING: 8 7/16" x 10 11/16"

ALL NICHEs ARE 11 7/8" INSIDE DEPTH

SUMMARY: 98 SINGLE NICHEs
48 DOUBLE NICHEs
146 TOTAL UNITS

ALL URNs ARE NOT TO EXCEED INTERIOR DIMENSIONS OF DOUBLE OR SINGLE NICHEs AS LISTED ABOVE.

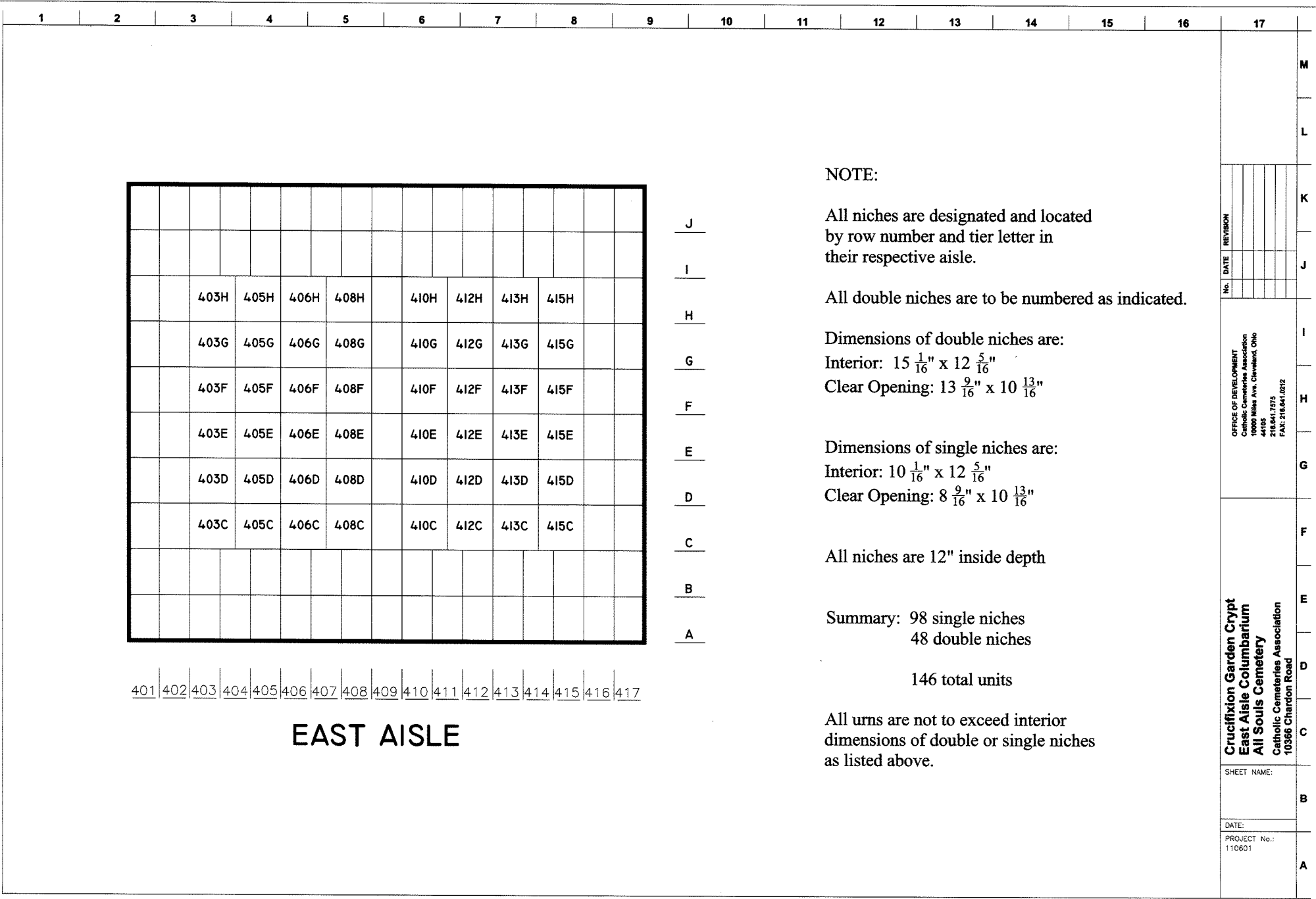
		303H	305H	306H	308H		310H	312H	313H	315H										
		303G	305G	306G	308G		310G	312G	313G	315G										
		303F	305F	306F	308F		310F	312F	313F	315F										
		303E	305E	306E	308E		310E	312E	313E	315E										
		303D	305D	306D	308D		310D	312D	313D	315D										
		303C	305C	306C	308C		310C	312C	313C	315C										

J
I
H
G
F
E
D
C
B
A

301 | 302 | 303 | 304 | 305 | 306 | 307 | 308 | 309 | 310 | 311 | 312 | 313 | 314 | 315 | 316 | 317

SOUTHEAST AISLE

ALL SOULS CEMETERY
CHARDON, OHIO
CRUCIFIXION GARDEN CRYPT
SOUTHEAST AISLE COLUMBARIUM
NOT TO SCALE J.G. APRIL 5, 1999



EAST AISLE

J
I
H
G
F
E
D
C
B
A

NOTE:

All niches are designated and located by row number and tier letter in their respective aisle.

All double niches are to be numbered as indicated.

Dimensions of double niches are:
 Interior: $15 \frac{1}{16}$ " x $12 \frac{5}{16}$ "
 Clear Opening: $13 \frac{9}{16}$ " x $10 \frac{13}{16}$ "

Dimensions of single niches are:
 Interior: $10 \frac{1}{16}$ " x $12 \frac{5}{16}$ "
 Clear Opening: $8 \frac{9}{16}$ " x $10 \frac{13}{16}$ "

All niches are 12" inside depth

Summary: 98 single niches
 48 double niches

146 total units

All urns are not to exceed interior dimensions of double or single niches as listed above.

No.		DATE	REVISION

**Crucifixion Garden Crypt
 East Aisle Columbarium
 All Souls Cemetery
 Catholic Cemeteries Association
 10366 Chardon Road**

OFFICE OF DEVELOPMENT
 Catholic Cemeteries Association
 10000 Miles Ave. Cleveland, Ohio
 44105
 216.841.7975
 FAX: 216.841.0212

SHEET NAME:
 DATE:
 PROJECT No.: 110601

**M
L
K
J
I
H
G
F
E
D
C
B
A**