

Sec. 23

24' UPPER ROAD

24' ROAD

Sec. 26

SEC. 23

SEC. 33

SEC. 35

Sec. 32

24' LOWER ROAD

Sec. 33

ALL SOULS CEMETERY  
 EAST PART  
**SECTION 24**

SCALE: 1" = 20' T.H. MARCH 27, 1972

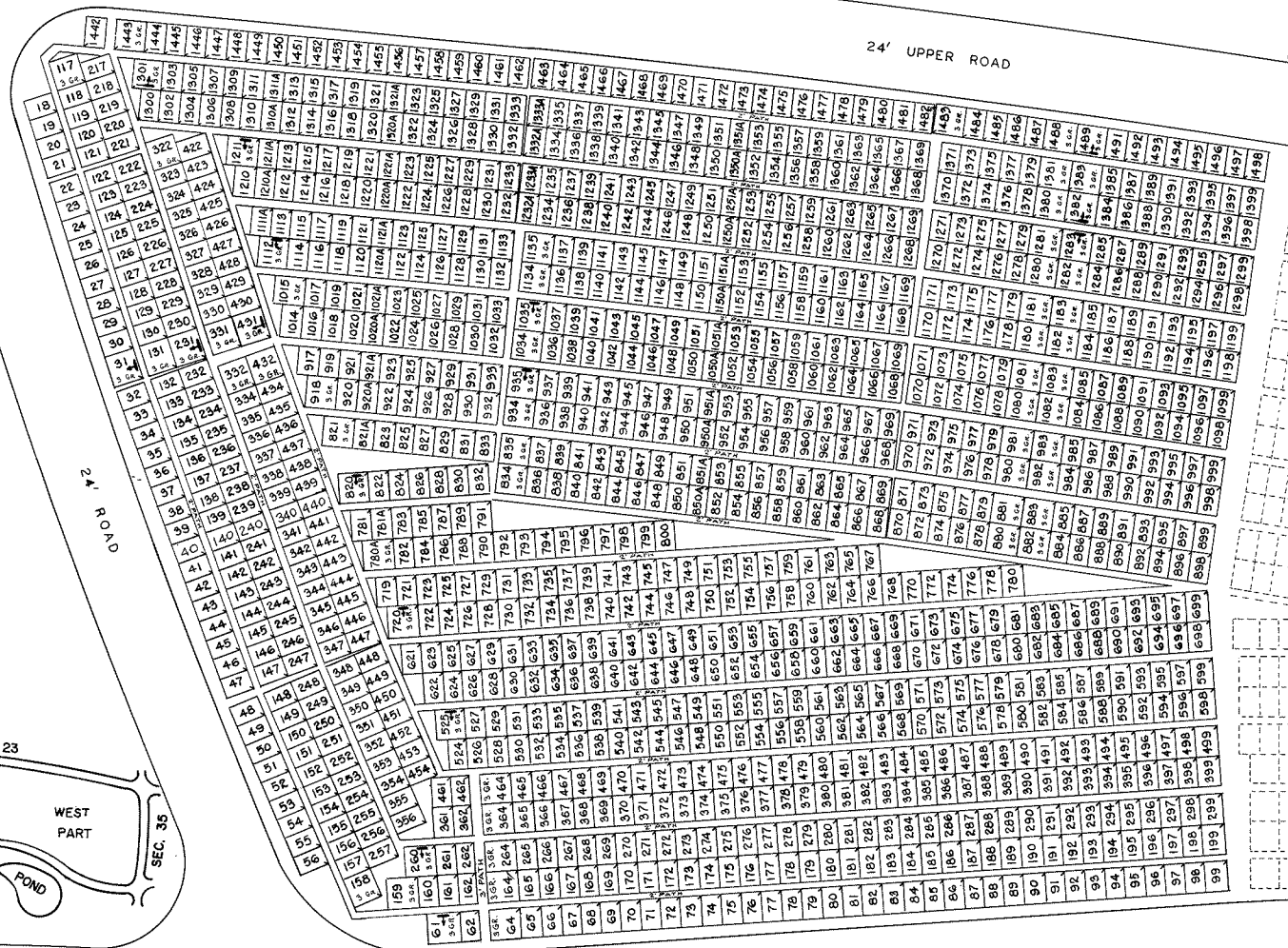
NOTE:  
 THE LOT NUMBER IS PLACED IN THE UPPER  
 RIGHT HAND CORNER OF LOTS AS YOU FACE  
 THE LOT AND IS INDICATED THUS

LOCATION OF GR. MARKER SHOWN THUS  
 ARROW INDICATES DIRECTION GRAVE  
 MARKERS WILL FACE.

ALL LOTS ARE 2 GRAVE LOTS EXCEPT  
 WHERE OTHERWISE NOTED.

ALL 2 GR. LOTS ARE 6' X 9'  
 ALL 3 GR. LOTS ARE 9' X 9'

LOT SUMMARY  
 1165 2 GR. LOTS  
 64 3 GR. LOTS  
 1229 TOTAL LOTS



24' UPPER ROAD

24' LOWER ROAD

NOTE: THE LOT NUMBER IS PLACED IN THE UPPER RIGHT HAND CORNER OF LOTS AS YOU FACE THE LOT AND IS INDICATED THUS

LOCATION OF GR. MARKER SHOWN THUS T ARROW INDICATES DIRECTION GRAVE MARKERS WILL FACE.

ALL LOTS ARE 2 GRAVE LOTS EXCEPT WHERE OTHERWISE NOTED.

ALL 2 GR. LOTS ARE 6' X 9'  
ALL 3 GR. LOTS ARE 9' X 9'

LOT SUMMARY  
1410 2 GR. LOTS  
132 3 GR. LOTS  
1542 TOTAL LOTS

24' ROAD

Sec 35

Sec 33

LAKE "D"

ALL SOULS CEMETERY  
WEST PART  
**SECTION 24**

REV. 7-2-87  
REV. 4-5-76

SCALE: 1" = 20' T.H. DEC 27, 1972

