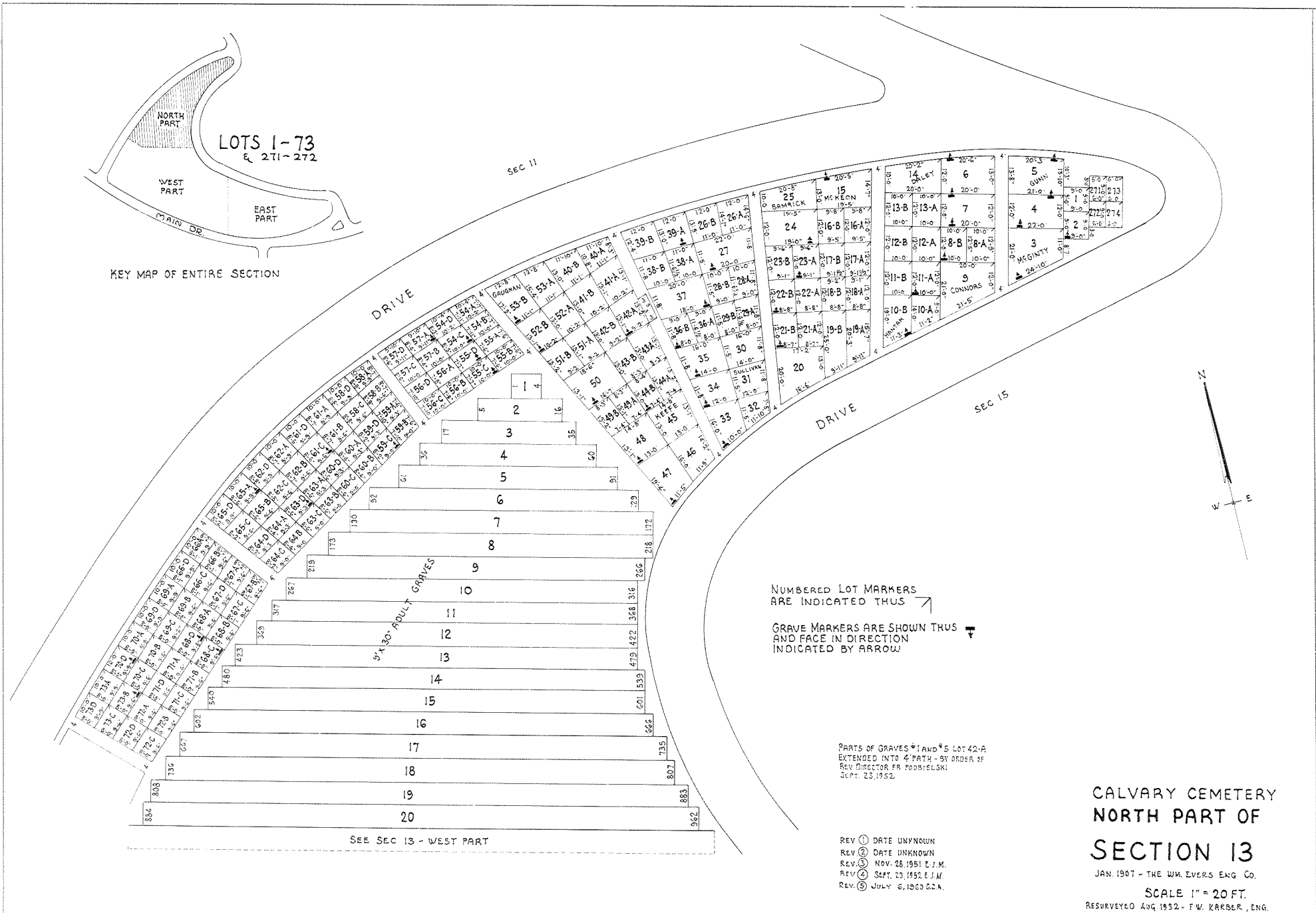


KEY MAP OF ENTIRE SECTION



NUMBERED LOT MARKERS ARE INDICATED THUS ↗
GRAVE MARKERS ARE SHOWN THUS ↑

PARTS OF GRAVES *1 AND *5 LOT 42-A EXTENDED INTO 4' PATH - BY ORDER OF REV DIRECTOR FR PODSIELSKI SEPT. 23, 1952.

SEE SEC 13 - WEST PART

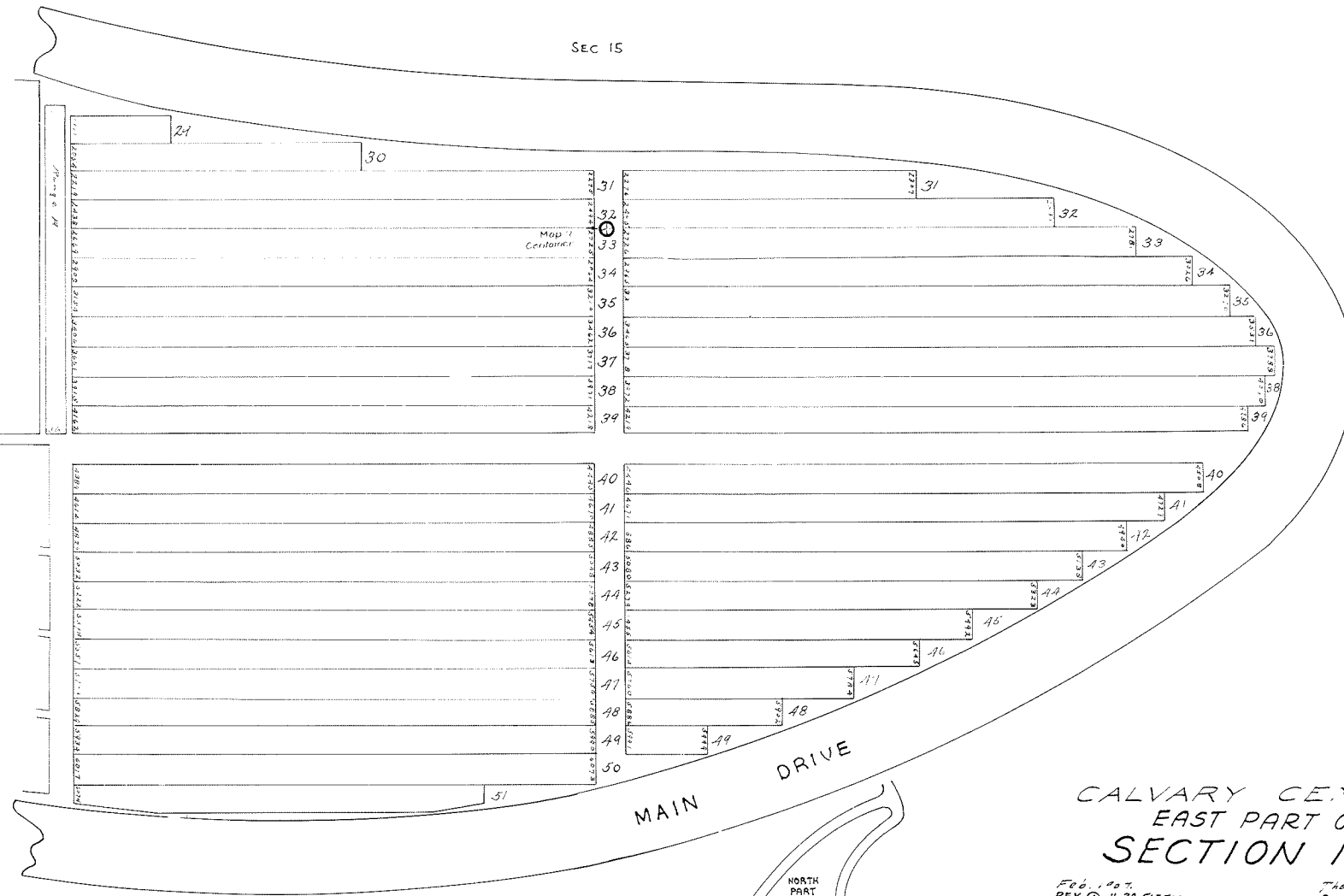
- REV ① DATE UNKNOWN
- REV ② DATE UNKNOWN
- REV ③ NOV. 28, 1951 E.J.M.
- REV ④ SEPT. 23, 1952 E.J.M.
- REV ⑤ JULY 6, 1950 D.C.A.

**CALVARY CEMETERY
NORTH PART OF
SECTION 13**
JAN. 1907 - THE WM. EVERS ENG. CO.
SCALE 1" = 20 FT.
RESURVEYED AUG 1952 - F.W. KARBER, ENG.

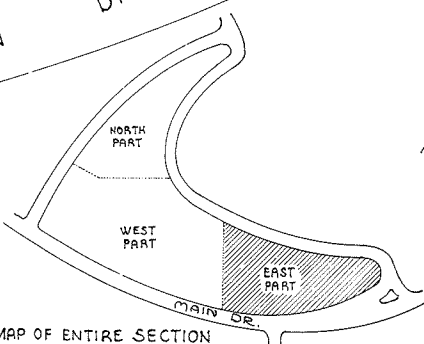
SEC 15



SEE SEC 13 - WEST PART



MAIN DRIVE



KEY MAP OF ENTIRE SECTION

CALVARY CEMETERY
 EAST PART OF
 SECTION 13

FEB. 1907.
 REV. ① 11-28-51 E.T.M.

The W. H. Evers Eng. Co.
 SCALE 1" = 20 FEET

CALVARY CEMETERY
WEST PART OF
SECTION 13

DEC. 1905 - JAN. 1907 - THE WM. EVERS ENG. CO.
RESURVEYED - AUG. 1932 - F. W. KARDER, ENG.

SCALE 1" = 20 FT.

REV. ① DATE UNKNOWN
REV. ② NOV. 28 - 1951 E. J. M.

SEE SEC. 13 NORTH PART

21
RANGE B

- 22
- 23
- 24
- 25
- 26
- 27
- 28
- 29
- 30
- 31
- 32
- 33
- 34
- 35
- 36
- 37
- 38
- 39

9' x 30' ADULT GRAVES

9' x 30' ADULT GRAVES



Sec. 11

DRIVE

DRIVE

SEC. 15

EAST PART
SEE SEC. 13

LOTS 74-270

NORTH PART

WEST PART

EAST PART

KEY MAP OF ENTIRE SECTION

MAIN DRIVE

DRIVE

SEC. 14

NUMBERED LOT MARKERS
ARE INDICATED THUS ↗

GRAVE MARKERS ARE SHOWN THUS ▽
AND FACE IN DIRECTION
INDICATED BY ARROW

