

CALVARY CEMETERY

NORTH PART SECTION 11-35

November 1925
Rev. © 9-16-47
Rev. © 7-2-46

F. V. Karber,
Engineer for Calvary Cemetery

SEC. 34

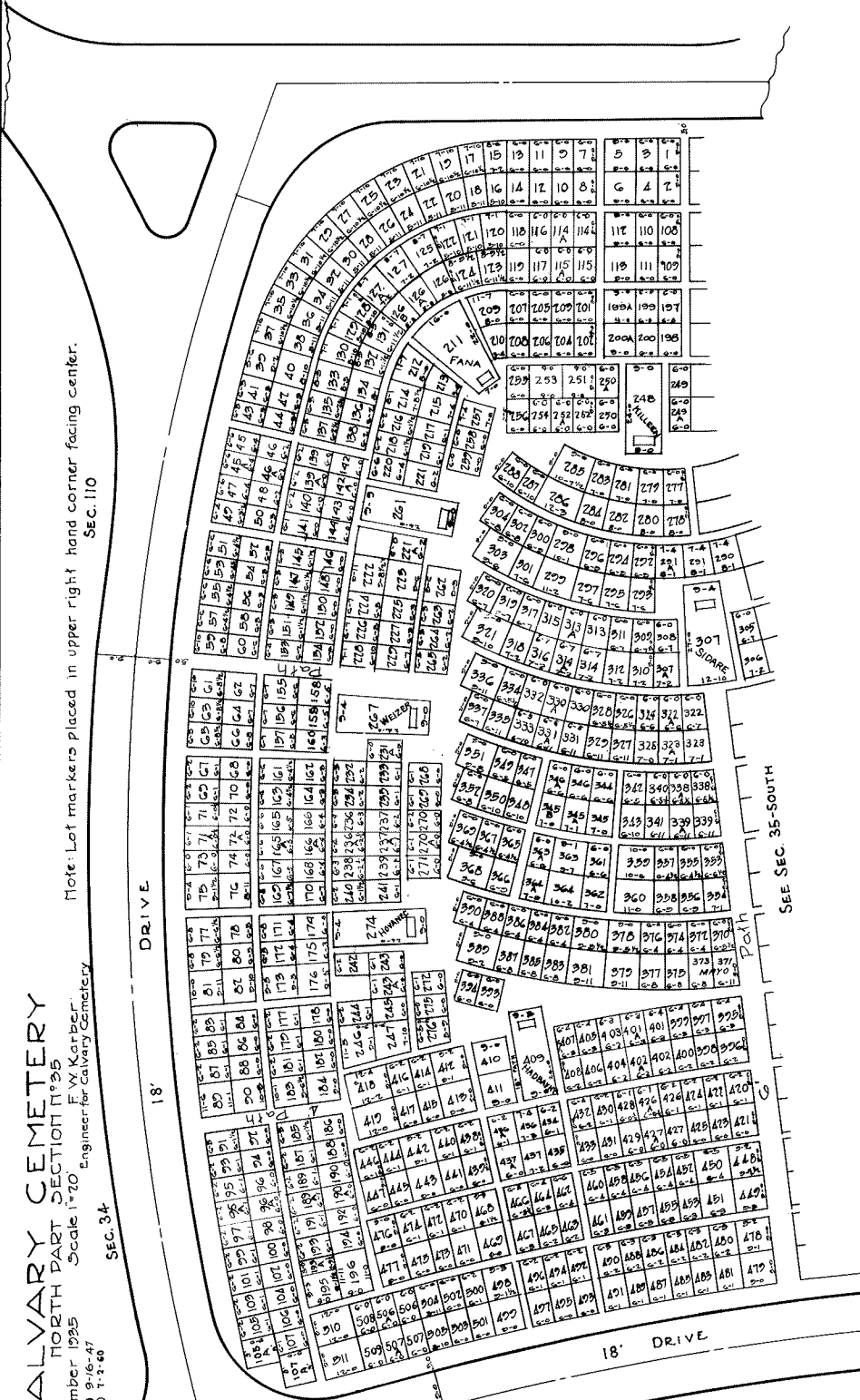
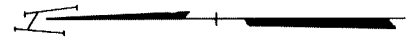
Note: Lot markers placed in upper right hand corner facing center.
SEC. 110

18' DRIVE

18' DRIVE

SEC. 30

SEE SEC. 35-SOUTH



Summary for Entire Section

Total 2374 Grave Lots - 975 Graves - Area = 36,6597
 Total Non-Grave Lots - 265 Graves - 265717
 Total Lots - 987 Graves - 2204 Area - 68,3579

Total Saleable Area = 68,3579 Sq. Ft.
 Gross Area to Center of Drive = 102,2480 Sq. Ft. = 2.363 Ac.

Total Saleable Area (this map) = 32,904.1

CALVARY CEMETERY

SOUTH PART SECTION 35
 F.W. Karber
 December, 1935
 Scale 1" = 10' Engineer for Calvary Cemetery
 Rev. 11-1-40

Note: Lot markers placed in upper right hand corner facing center.

SEE SEC. 35-NORTH

Map Container

SEC. 30

SEC. 64

DRIVE 18'

DRIVE 18'

Summary Lots	
5120	1710
7024	432
4	45
	70
Total 485 1072	

Monument Lots	
3120	1710
16	45
10	70

Size	Area	Gr.	Size	Area	Gr.
1 1/2' x 2 1/2'	7125	20	1 1/2' x 2 1/2'	6687	16
1 1/2' x 2 1/2'	7125	20	1 1/2' x 2 1/2'	6687	16
1 1/2' x 2 1/2'	7125	20	1 1/2' x 2 1/2'	6687	16
1 1/2' x 2 1/2'	7125	20	1 1/2' x 2 1/2'	6687	16
1 1/2' x 2 1/2'	7125	20	1 1/2' x 2 1/2'	6687	16

Lot No.	Area	Gr.
520A	54.2	2
521A	54.2	2
522A	54.2	2
523A	54.2	2
524A	54.2	2
525A	54.2	2
526A	54.2	2
527A	54.2	2
528A	54.2	2
529A	54.2	2
530A	54.2	2
531A	54.2	2
532A	54.2	2
533A	54.2	2
534A	54.2	2
535A	54.2	2
536A	54.2	2
537A	54.2	2
538A	54.2	2
539A	54.2	2
540A	54.2	2
541A	54.2	2
542A	54.2	2
543A	54.2	2
544A	54.2	2
545A	54.2	2
546A	54.2	2
547A	54.2	2
548A	54.2	2
549A	54.2	2
550A	54.2	2
551A	54.2	2
552A	54.2	2
553A	54.2	2
554A	54.2	2
555A	54.2	2
556A	54.2	2
557A	54.2	2
558A	54.2	2
559A	54.2	2
560A	54.2	2
561A	54.2	2
562A	54.2	2
563A	54.2	2
564A	54.2	2
565A	54.2	2
566A	54.2	2
567A	54.2	2
568A	54.2	2
569A	54.2	2
570A	54.2	2
571A	54.2	2
572A	54.2	2
573A	54.2	2
574A	54.2	2
575A	54.2	2
576A	54.2	2
577A	54.2	2
578A	54.2	2
579A	54.2	2
580A	54.2	2
581A	54.2	2
582A	54.2	2
583A	54.2	2
584A	54.2	2
585A	54.2	2
586A	54.2	2
587A	54.2	2
588A	54.2	2
589A	54.2	2
590A	54.2	2
591A	54.2	2
592A	54.2	2
593A	54.2	2
594A	54.2	2
595A	54.2	2
596A	54.2	2
597A	54.2	2
598A	54.2	2
599A	54.2	2
600A	54.2	2