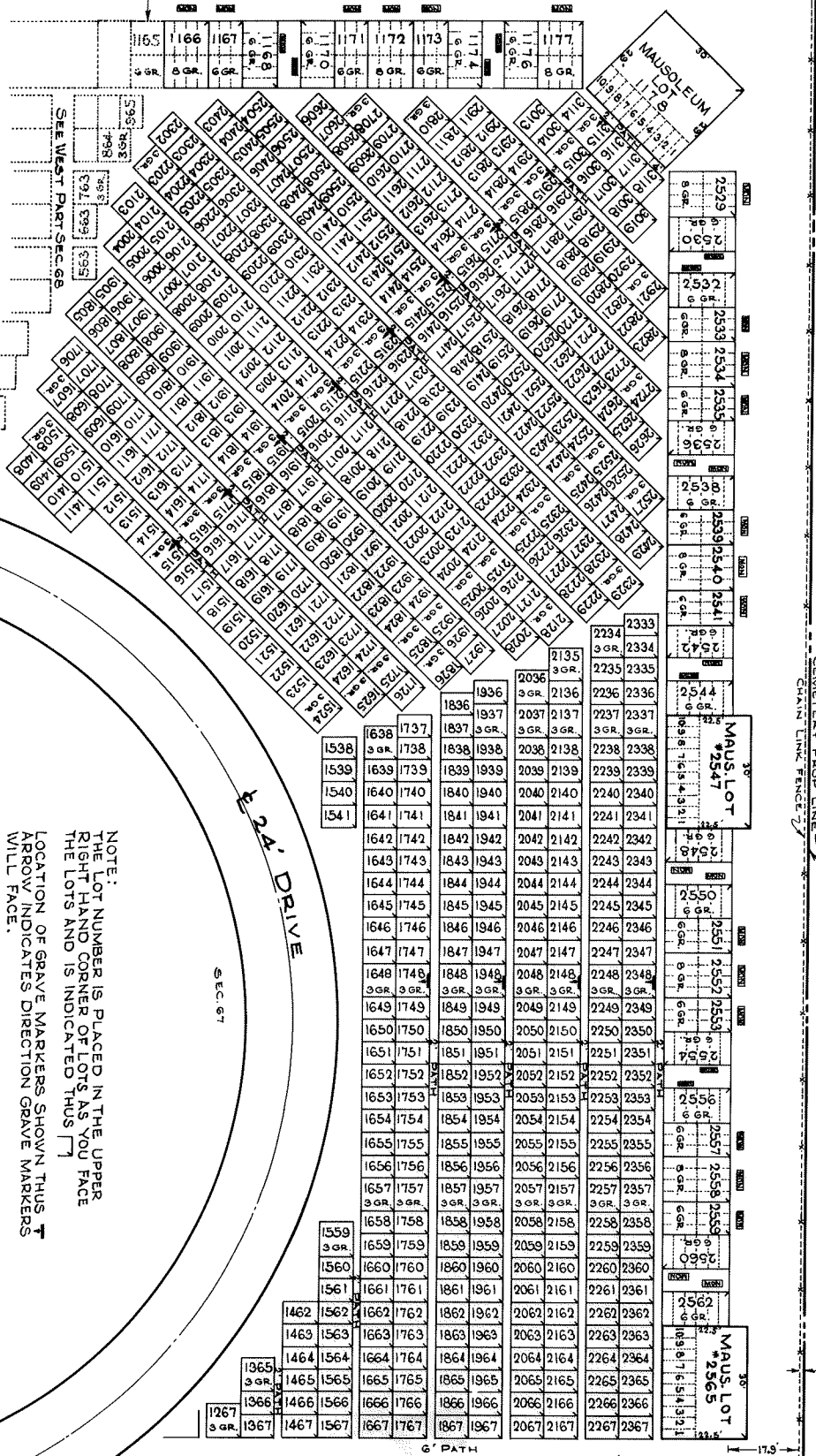
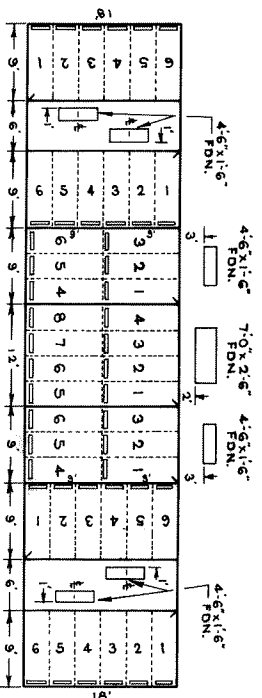


PURITAN AVE. 30'



MONUMENT LOTS  
(GRAVE MARKER LOCATION)  
TYPICAL MONUMENT LOCATION



NOTE:  
THE LOT NUMBER IS PLACED IN THE UPPER  
RIGHT HAND CORNER OF LOTS AS YOU FACE  
THE LOTS AND IS INDICATED THUS [T]  
LOCATION OF GRAVE MARKERS SHOWN THUS T  
ARROW INDICATES DIRECTION GRAVE MARKERS  
WILL FACE.  
ALL LOTS ARE 2 GRAVE LOTS EXCEPT WHERE  
OTHERWISE NOTED.  
ALL 2 GRAVE LOTS ARE 6'x9'  
ALL 3 GRAVE LOTS ARE 9'x9'  
ALL 6 GRAVE LOTS ARE 9'x18' (MON)  
ALL 8 GRAVE LOTS ARE 12'x18' (MON)

LOT SUMMARY  
554 - 2 GRAVE LOTS  
67 - 3 GRAVE LOTS  
27 - 6 GRAVE LOTS  
9 - 8 GRAVE LOTS  
3 - MAUS LOTS  
653 - TOTAL LOTS

CALVARY CEMETERY  
EAST PART  
SECTION 68

SCALE 1" = 20' G.C.A. FEBRUARY, 1862

REV. 1 9/23

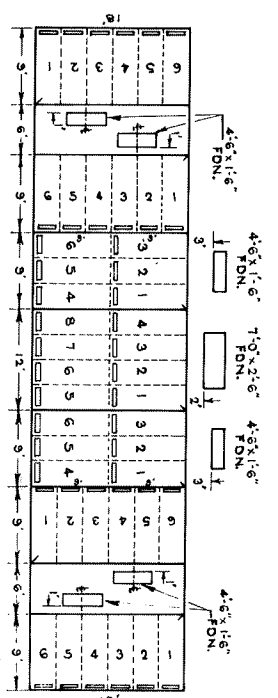
CALVARY CEMETERY  
GRAVE LINE 2  
GRAVE LINE FENCE 2

PURITAN AVE. 30'

CEMETERY PROP. LINES  
CHAIN LINK FENCE

206	306	406	506	606	706	806	906	MAUS LOT #110
207	307	407	507	607	707	807	907	MAUS LOT #110
208	308	408	508	608	708	808	908	MAUS LOT #110
209	309	409	509	609	709	809	909	MAUS LOT #110
210	310	410	510	610	710	810	910	MAUS LOT #110
211	311	411	511	611	711	811	911	MAUS LOT #110
212	312	412	512	612	712	812	912	MAUS LOT #110
213	313	413	513	613	713	813	913	MAUS LOT #110
214	314	414	514	614	714	814	914	MAUS LOT #110
215	315	415	515	615	715	815	915	MAUS LOT #110
216	316	416	516	616	716	816	916	MAUS LOT #110
217	317	417	517	617	717	817	917	MAUS LOT #110
218	318	418	518	618	718	818	918	MAUS LOT #110
219	319	419	519	619	719	819	919	MAUS LOT #110
220	320	420	520	620	720	820	920	MAUS LOT #110
221	321	421	521	621	721	821	921	MAUS LOT #110
222	322	422	522	622	722	822	922	MAUS LOT #110
223	323	423	523	623	723	823	923	MAUS LOT #110
224	324	424	524	624	724	824	924	MAUS LOT #110
225	325	425	525	625	725	825	925	MAUS LOT #110
226	326	426	526	626	726	826	926	MAUS LOT #110
227	327	427	527	627	727	827	927	MAUS LOT #110
228	328	428	528	628	728	828	928	MAUS LOT #110
229	329	429	529	629	729	829	929	MAUS LOT #110
230	330	430	530	630	730	830	930	MAUS LOT #110
231	331	431	531	631	731	831	931	MAUS LOT #110
132	232	332	432	532	632	732	832	932
133	233	333	433	533	633	733	833	933
134	234	334	434	534	634	734	834	934
135	235	335	435	535	635	735	835	935
136	236	336	436	536	636	736	836	936
137	237	337	437	537	637	737	837	937
138	238	338	438	538	638	738	838	938
139	239	339	439	539	639	739	839	939
140	240	340	440	540	640	740	840	940
141	241	341	441	541	641	741	841	941
142	242	342	442	542	642	742	842	942
143	243	343	443	543	643	743	843	943
144	244	344	444	544	644	744	844	944
145	245	345	445	545	645	745	845	945
146	246	346	446	546	646	746	846	946
147	247	347	447	547	647	747	847	947
148	248	348	448	548	648	748	848	948
149	249	349	449	549	649	749	849	949
150	250	350	450	550	650	750	850	950
151	251	351	451	551	651	751	851	951
152	252	352	452	552	652	752	852	952
153	253	353	453	553	653	753	853	953
54	154	254	354	454	554	654	754	854
55	155	255	355	455	555	655	755	855
56	156	256	356	456	556	656	756	856
57	157	257	357	457	557	657	757	857
58	158	258	358	458	558	658	758	858
59	159	259	359	459	559	659	759	859
60	160	260	360	460	560	660	760	860
				462	562	662	762	862
				563	663	763	863	963
							864	964
							865	965

MONUMENT LOTS  
GRAVE MARKER LOCATION  
MONUMENT LOCATION



NOTE:  
THE LOT NUMBER IS PLACED IN THE UPPER RIGHT HAND CORNER OF LOTS AS YOU FACE THE LOTS AND IS INDICATED THUS [ ]  
LOCATION OF GRAVE MARKERS SHOWN THUS [ ]  
ARROW INDICATES DIRECTION GRAVE MARKERS WILL FACE.

ALL LOTS ARE 2 GRAVE LOTS EXCEPT WHERE OTHERWISE NOTED  
ALL 2 GRAVE LOTS ARE 6'x9'  
ALL 3 GRAVE LOTS ARE 9'x9'  
ALL 6 GRAVE MON LOTS ARE 9'x18'  
ALL 8 GRAVE MON LOTS ARE 12'x18'

LOT SUMMARY  
408 - 2 GRAVE LOTS  
80 - 3 GRAVE LOTS  
24 - 6 GRAVE LOTS (MON)  
3 - 8 GRAVE LOTS (MON)  
3 - MAUS. LOTS  
519 TOTAL LOTS

CALVARY CEMETERY  
WEST PART  
SECTION 68  
SCALE 1" = 20' G.C.A. FEBRUARY, 1962