

CALVARY CEMETERY  
 EAST PART OF  
**SECTION 82**  
 APRIL 14, 1950

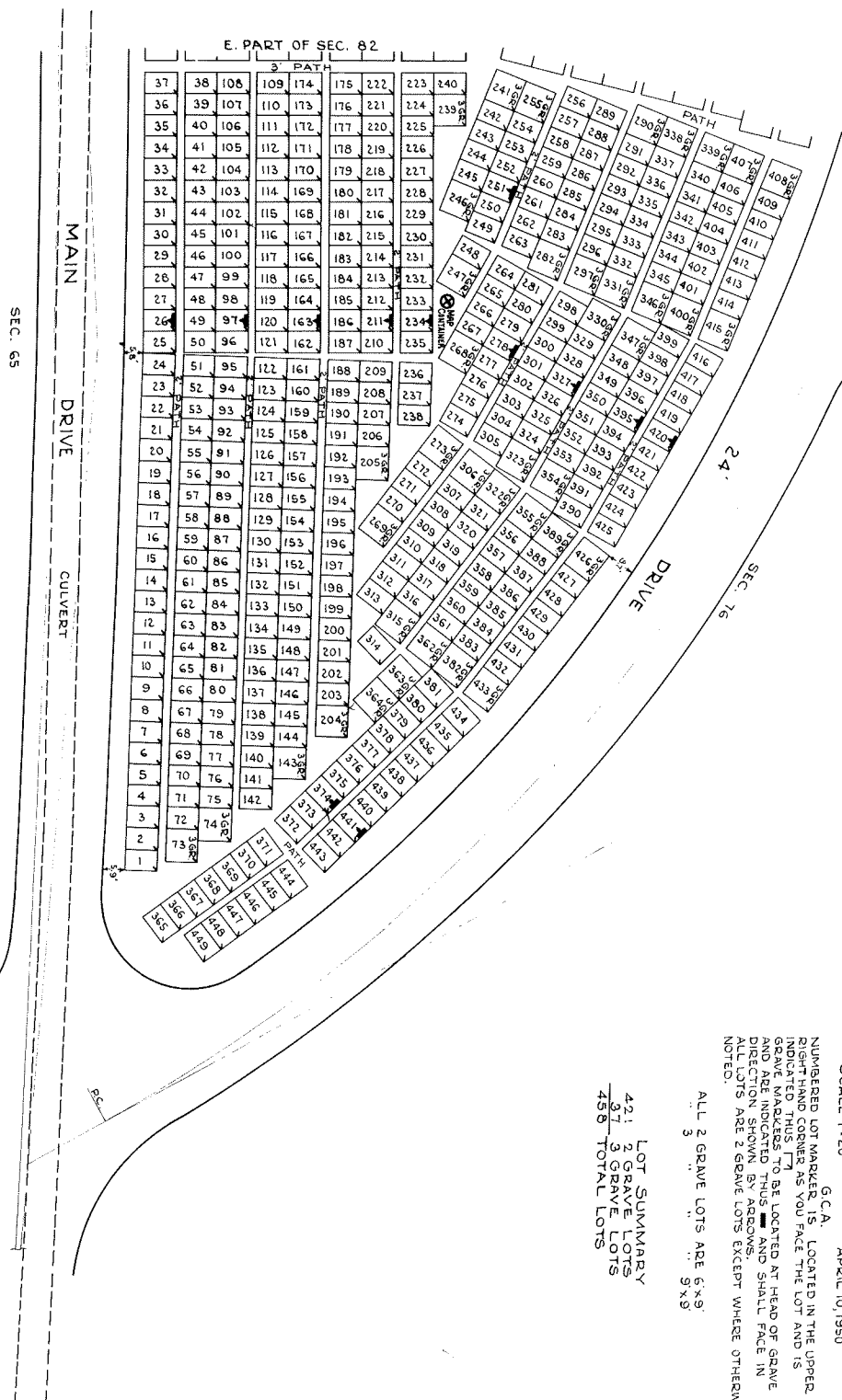
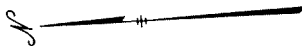
SCALE 1"=20' G.C.A.  
 NUMBERED LOT MARKER IS LOCATED IN THE UPPER RIGHT HAND CORNER AS YOU FACE THE LOT AND IS INDICATED THUS GRAVE MARKERS TO BE LOCATED AT HEAD OF GRAVE AND ARE INDICATED THUS AND SHALL FACE IN DIRECTIONS AS GRAVE LOTS EXCEPT WHERE OTHERWISE NOTED.  
 ALL 2 GRAVE LOTS ARE 6'x9'  
 3 " " " 5'x9'

LOT SUMMARY  
 691 - 20' GR. LOTS  
 28 - 3' GR. LOTS  
 709 - TOTAL LOTS

SEC. 65

SEC. 77

W. PART SEC. 82



421 LOT SUMMARY  
 51 GRAVE LOTS  
 450 TOTAL LOTS

ALL 2 GRAVE LOTS ARE 6'x9'  
 3 5'x9'

CALVARY CEMETERY  
 WEST PART OF  
**SECTION 82**  
 SCALE 1"=20'  
 APRIL 10, 1950  
 G.C.A.  
 NUMBERED LOT MARKER IS LOCATED IN THE UPPER  
 RIGHT HAND CORNER AS YOU FACE THE LOT AND IS  
 INDICATED BY AN ARROW. GRAVE MARKERS TO BE  
 LOCATED AT HEAD OF GRAVE AND ARE INDICATED  
 BY SMALL SQUARE AND DIRECTION SHOWN BY  
 ARROWS. ALL LOTS ARE 2 GRAVE LOTS EXCEPT  
 WHERE OTHERWISE NOTED.