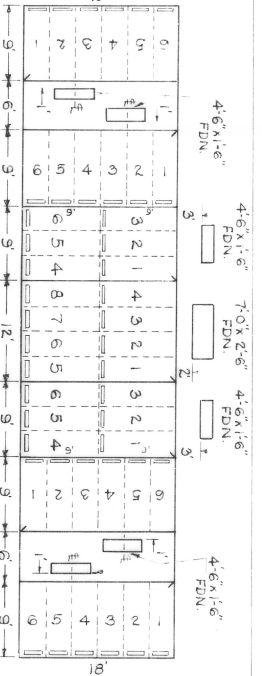


SEC 71

	6' PATH			
1	201	401	601	801
2	202	402	602	802
3	203	403	603	803
4	204	404	604	804
5	205	405	605	805
6	206	406	606	806
7	207	407	607	807
8	208	408	608	808
9	209	409	609	809
10	210	410	610	810
11	211	411	611	811
12	212	412	612	812
13	213	413	613	813
14	214	414	614	814
15	215	415	615	815
16	216	416	616	816
17	217	417	617	817
18	218	418	618	818
19	219	419	619	819
20	220	420	620	820
21	221	421	621	821
22	222	422	622	822
23	223	423	623	823
24	224	424	624	824
25	225	425	625	825
26	226	426	626	826
27	227	427	627	827
28	228	428	628	828
29	229	429	629	829
30	230	430	630	830
31	231	431	631	831
32	232	432	632	832
33	233	433	633	833
34	234	434	634	834
35	235	435	635	835
36	236	436	636	836
37	237	437	637	837
38	238	438	638	838
39	239	439	639	839
40	240	440	640	840
	4' PATH			
41	241	441	641	841
42	242	442	642	842
43	243	443	643	843
44	244	444	644	844
45	245	445	645	845
46	246	446	646	846
47	247	447	647	847
48	248	448	648	848
	6' PATH			
49	249	449	649	849
50	250	450	650	850
51	251	451	651	851
52	252	452	652	852
53	253	453	653	853
54	254	454	654	854
55	255	455	655	855
56	256	456	656	856
57	257	457	657	857
58	258	458	658	858
59	259	459	659	859
60	260	460	660	860
61	261	461	661	861
62	262	462	662	862
63	263	463	663	863
64	264	464	664	864
65	265	465	665	865
66	266	466	666	866
67	267	467	667	867
68	268	468	668	868
69	269	469	669	869
	3' PATH			
70	270	470	670	870

GALVARY CEMETERY EAST PROPERTY LINE

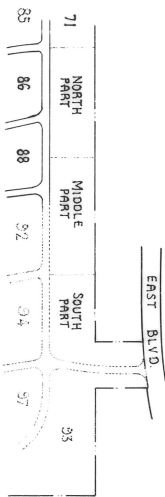


SEE SEC 87 - MIDDLE PART

( DRIVE 24' )

SEC 86

KEY MAP OF ENTIRE SECTION



THE LOT NUMBER IS PLACED IN THE UPPER RIGHT HAND CORNER OF LOTS AS YOU FACE THE LOTS AND IS INDICATED THUS [arrow pointing to upper right corner]

LOCATION OF GRAVE MARKERS SHOWN THUS [arrow pointing to marker symbol]

ARROW INDICATES DIRECTION GRAVE MARKERS WILL FACE [arrow pointing to marker symbol]

ALL LOTS ARE 2 GRAVE LOTS EXCEPT WHERE OTHERWISE NOTED

ALL 2 GRAVE LOTS ARE 6'x9'

ALL 3 GRAVE LOTS ARE 9'x9'

SEC 88

GALVARY CEMETERY  
NORTH PART OF  
**SECTION 87**

SCALE 1"=20'  
E J M  
MAY 25 1954

NET 1-1-2-74  
REV 10 2-10-74

SEE SEC. 87 - NORTH PART

70	270	470	670	870	1070	1270	1470	1670
71	271	471	671	871	1071	1271	1471	1671
72	272	472	672	872	1072	1272	1472	1672
73	273	473	673	873	1073	1273	1473	1673
74	274	474	674	874	1074	1274	1474	1674
75	275	475	675	875	1075	1275	1475	1675
76	276	476	676	876	1076	1276	1476	1676
77	277	477	677	877	1077	1277	1477	1677
78	278	478	678	878	1078	1278	1478	1678
79	279	479	679	879	1079	1279	1479	1679
80	280	480	680	880	1080	1280	1480	1680
81	281	481	681	881	1081	1281	1481	1681
82	282	482	682	882	1082	1282	1482	1682
83	283	483	683	883	1083	1283	1483	1683
84	284	484	684	884	1084	1284	1484	1684
85	285	485	685	885	1085	1285	1485	1685
86	286	486	686	886	1086	1286	1486	1686
87	287	487	687	887	1087	1287	1487	1687
88	288	488	688	888	1088	1288	1488	1688
89	289	489	689	889	1089	1289	1489	1689
90	290	490	690	890	1090	1290	1490	1690
91	291	491	691	891	1091	1291	1491	1691
92	292	492	692	892	1092	1292	1492	1692
93	293	493	693	893	1093	1293	1493	1693
94	294	494	694	894	1094	1294	1494	1694
95	295	495	695	895	1095	1295	1495	1695
96	296	496	696	896	1096	1296	1496	1696
97	297	497	697	897	1097	1297	1497	1697
98	298	498	698	898	1098	1298	1498	1698
99	299	499	699	899	1099	1299	1499	1699
100	300	500	700	900	1100	1300	1500	1700
101	301	501	701	901	1101	1301	1501	1701
102	302	502	702	902	1102	1302	1502	1702
103	303	503	703	903	1103	1303	1503	1703
104	304	504	704	904	1104	1304	1504	1704
105	305	505	705	905	1105	1305	1505	1705
106	306	506	706	906	1106	1306	1506	1706
107	307	507	707	907	1107	1307	1507	1707
108	308	508	708	908	1108	1308	1508	1708
109	309	509	709	909	1109	1309	1509	1709
110	310	510	710	910	1110	1310	1510	1710
111	311	511	711	911	1111	1311	1511	1711
112	312	512	712	912	1112	1312	1512	1712
113	313	513	713	913	1113	1313	1513	1713
114	314	514	714	914	1114	1314	1514	1714
115	315	515	715	915	1115	1315	1515	1715
116	316	516	716	916	1116	1316	1516	1716
117	317	517	717	917	1117	1317	1517	1717
118	318	518	718	918	1118	1318	1518	1718
119	319	519	719	919	1119	1319	1519	1719
120	320	520	720	920	1120	1320	1520	1720
121	321	521	721	921	1121	1321	1521	1721
122	322	522	722	922	1122	1322	1522	1722
123	323	523	723	923	1123	1323	1523	1723
124	324	524	724	924	1124	1324	1524	1724
125	325	525	725	925	1125	1325	1525	1725
126	326	526	726	926	1126	1326	1526	1726
127	327	527	727	927	1127	1327	1527	1727
128	328	528	728	928	1128	1328	1528	1728
129	329	529	729	929	1129	1329	1529	1729
130	330	530	730	930	1130	1330	1530	1730
131	331	531	731	931	1131	1331	1531	1731
132	332	532	732	932	1132	1332	1532	1732
133	333	533	733	933	1133	1333	1533	1733
134	334	534	734	934	1134	1334	1534	1734
135	335	535	735	935	1135	1335	1535	1735
136	336	536	736	936	1136	1336	1536	1736
137	337	537	737	937	1137	1337	1537	1737

( DRIVE 24 )

SEC 88

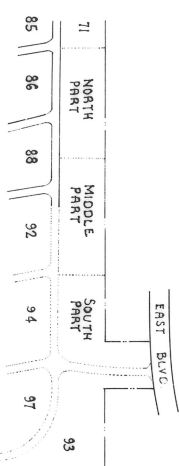
THE LOT NUMBER IS PLACED IN THE UPPER RIGHT HAND CORNER OF LOTS AS YOU FACE THE LOTS AND IS INDICATED THUS [Diagram]

LOCATION OF GRAVE MARKERS SHOWN THUS [Diagram] ARROW INDICATES DIRECTION GRAVE MARKERS WILL FACE

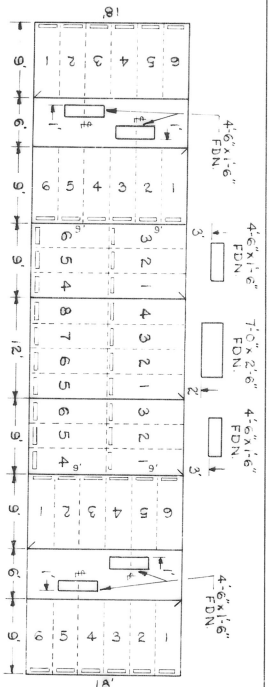
ALL LOTS ARE 2 GRAVE LOTS EXCEPT WHERE OTHERWISE NOTED.

ALL 2 GRAVE LOTS ARE 6'x9'  
ALL 3 GRAVE LOTS ARE 9'x9'

KEY MAP OF ENTIRE SECTION



SEC. 92



CALVARY CEMETERY EAST PROPERTY LINE



CALVARY CEMETERY  
MIDDLE PART OF  
SECTION 87  
SCALE 1"=20'  
EJM  
JUNE 30, 1954