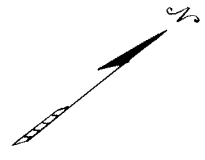


UPPER DRIVE

LOWER DRIVE

SEC. 91

SEC. 94



THE LOT NUMBER IS PLACED IN THE UPPER RIGHT HAND CORNER OF LOTS AS YOU FACE THE LOTS AND IS INDICATED THUS

LOCATION OF GRAVE MARKERS SHOWN THUS

ARROW INDICATES DIRECTION GRAVE MARKERS WILL FACE

ALL LOTS ARE 2 GRAVE LOTS UNLESS NOTED OTHERWISE

ALL 2GR. LOTS ARE 6' x 9'

ALL 3GR. LOTS ARE 9' x 9'

LOT SUMMARY

699 2 GR. LOTS

772 3 GR. LOTS

TTT TOTAL LOTS

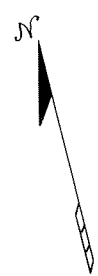
CALVARY CEMETERY

SOUTH PART

SECTION 91

SCALE 1"=20' L.S.D.

FEB. 1, 1969

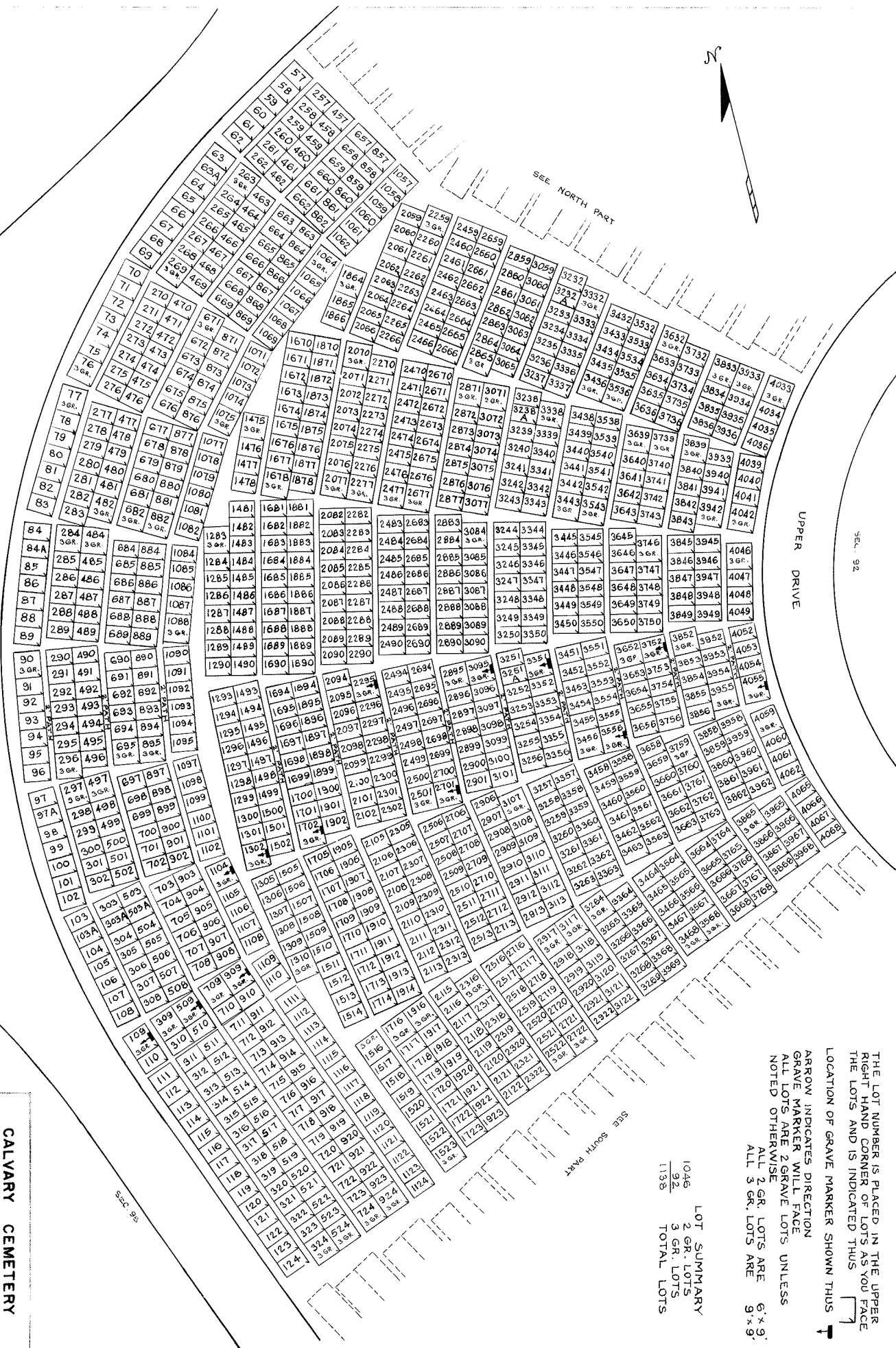


SEE NORTH PART

SEC. 92

UPPER DRIVE

LOWER DRIVE



LOT SUMMARY

1046
92
1139
TOTAL LOTS

THE LOT NUMBER IS PLACED IN THE UPPER RIGHT HAND CORNER OF LOTS AS YOU FACE THE LOTS AND IS INDICATED THUS [Diagram showing a lot with the number in the upper right corner]

ARROW INDICATES DIRECTION GRAVE MARKER WILL FACE

ALL LOTS ARE 2 GRAVE LOTS UNLESS NOTED OTHERWISE

ALL 2 GR. LOTS ARE 6' x 9'

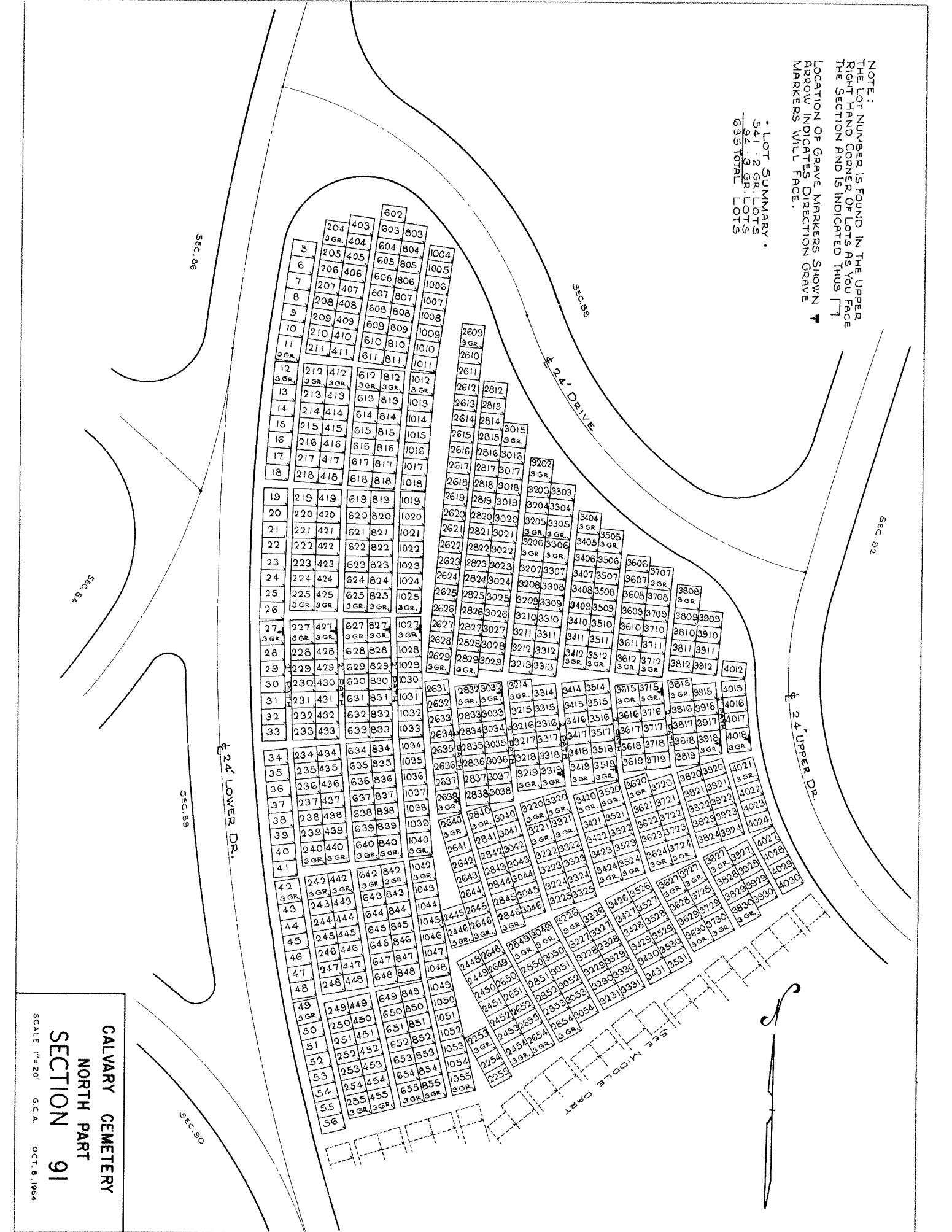
ALL 3 GR. LOTS ARE 9' x 9'

CALVARY CEMETERY
MIDDLE PART
SECTION 91

SCALE 1"=20' J.J.D.
FEB. 1, 1969.

NOTE:
 THE LOT NUMBER IS FOUND IN THE UPPER
 RIGHT HAND CORNER OF LOTS AS YOU FACE
 THE SECTION AND IS INDICATED THUS [7]
 LOCATION OF GRAVE MARKERS SHOWN
 ARROW INDICATES DIRECTION GRAVE
 MARKERS WILL FACE.

• LOT SUMMARY •
 541 2 GR. LOTS
 94 3 GR. LOTS
 635 TOTAL LOTS



CALVARY CEMETERY
 NORTH PART
 SECTION 91

SCALE 1"=20'
 G.C.A.
 OCT. 8, 1964