

NOTE:
 THE LOT NUMBER IS PLACED IN THE UPPER RIGHT
 HAND CORNER OF LOTS AS YOU FACE THE LOTS AND IS
 INDICATED THUS

LOCATION OF GRAVE MARKERS SHOWN THUS
 ARROW INDICATES DIRECTION GRAVE MARKERS
 WILL FACE.

ALL LOTS ARE 2 GRAVE LOTS EXCEPT WHERE
 OTHERWISE NOTED.

ALL 2 GRAVE LOTS ARE 6'x9'
 ALL 3 GRAVE LOTS ARE 9'x9'

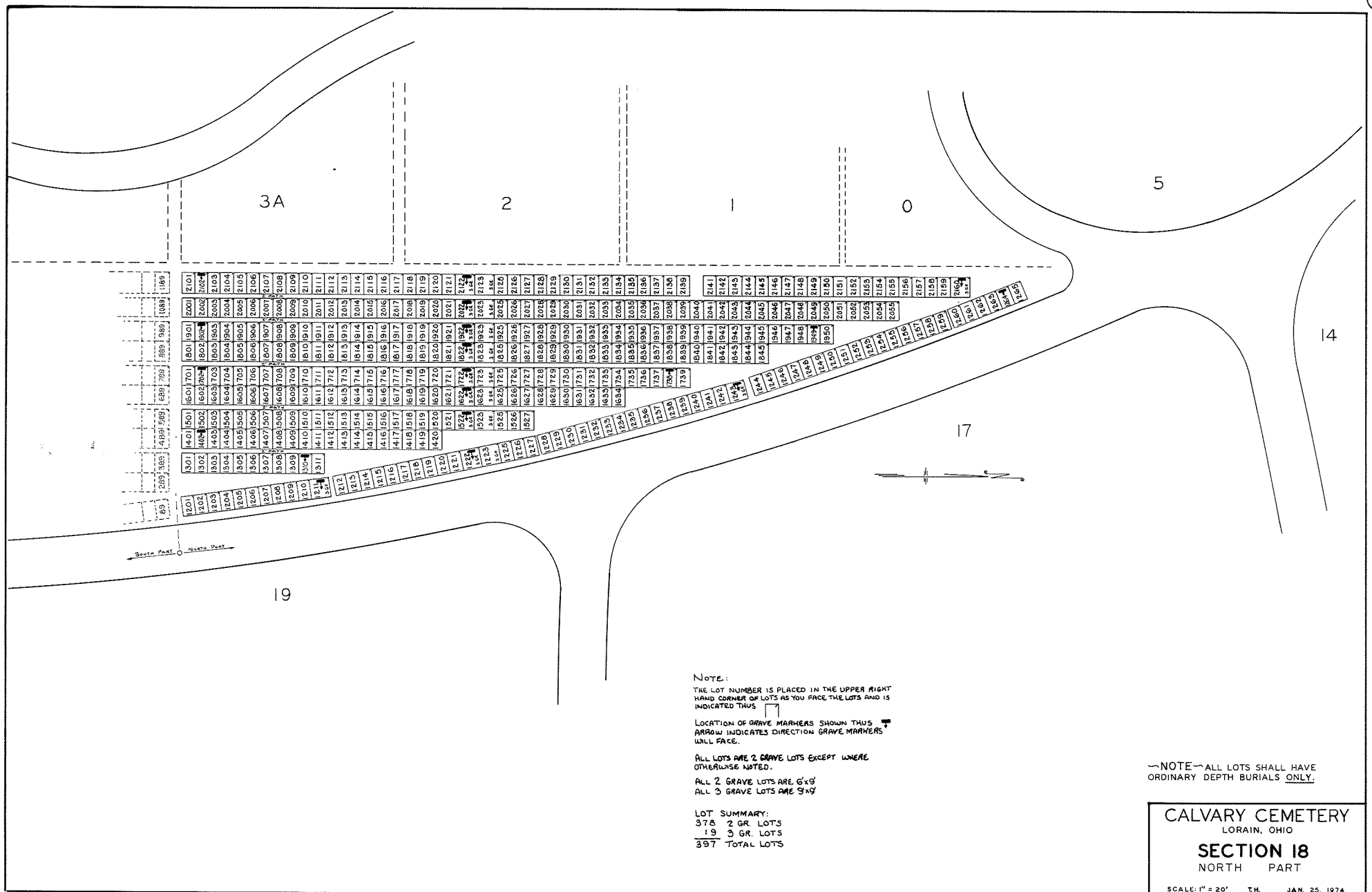
LOT SUMMARY:
 792 2 GR LOTS
 74 3 GR LOTS
 866 TOTAL LOTS

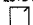



NOTE - ALL LOTS SHALL HAVE
 ORDINARY DEPTH BURIALS ONLY.

CALVARY CEMETERY
 LORAIN, OHIO
SECTION 18
 SOUTH PART

SCALE: 1" = 20' T.H. JAN. 30, 1974



NOTE:
 THE LOT NUMBER IS PLACED IN THE UPPER RIGHT
 HAND CORNER OF LOTS AS YOU FACE THE LOTS AND IS
 INDICATED THUS 
 LOCATION OF GRAVE MARKERS SHOWN THUS 
 ARROW INDICATES DIRECTION GRAVE MARKERS
 WILL FACE.
 ALL LOTS ARE 2 GRAVE LOTS EXCEPT WHERE
 OTHERWISE NOTED.
 ALL 2 GRAVE LOTS ARE 6'x9'
 ALL 3 GRAVE LOTS ARE 9'x9'

LOT SUMMARY:
 378 2 GR. LOTS
 18 3 GR. LOTS
 397 TOTAL LOTS

NOTE - ALL LOTS SHALL HAVE
 ORDINARY DEPTH BURIALS ONLY.

CALVARY CEMETERY
 LORAIN, OHIO
SECTION 18
 NORTH PART

SCALE: 1" = 20' T.H. JAN. 25, 1974