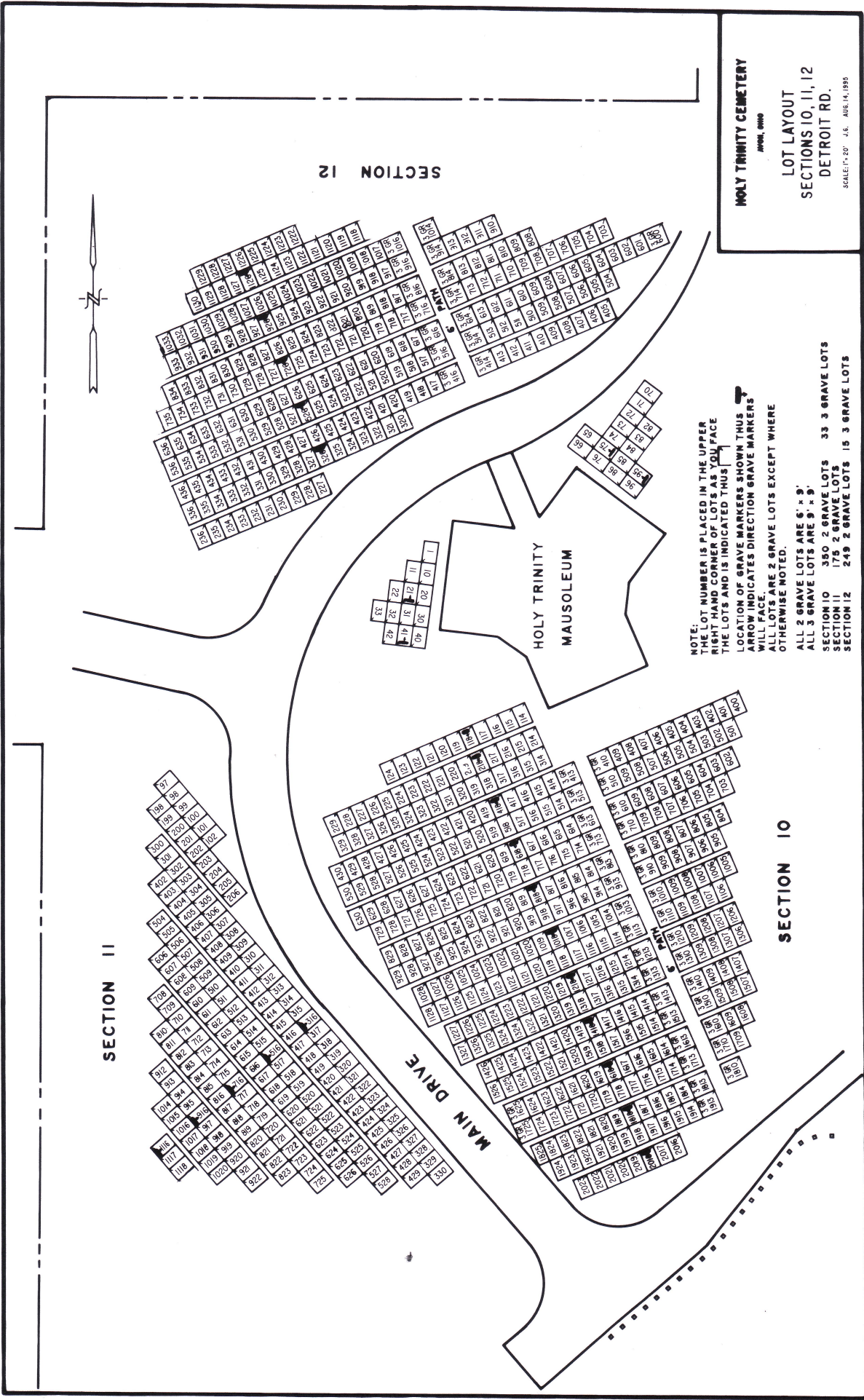




HOLY TRINITY CEMETERY
 33601 DETROIT RD., AVON OHIO

0 20
 ORIGINAL DRAWING BY: TOM FELL, NOV. 17, 1988
 REDRAWN BY: S. GARDNER, MARCH 16, 1992



HOLY TRINITY CEMETERY
 ANN ARBOR, MICH.
LOT LAYOUT
SECTIONS 10, 11, 12
DETROIT RD.
 SCALE: 1" = 20' - J.E. AUG. 14, 1995

NOTE:
 THE LOT NUMBER IS PLACED IN THE UPPER
 RIGHT HAND CORNER OF LOTS AS YOU FACE
 THE LOTS AND IS INDICATED THUS [arrow symbol]
 LOCATION OF GRAVE MARKERS SHOWN THUS [arrow symbol]
 WILL FACE. ARROW INDICATES DIRECTION GRAVE MARKERS
 ALL LOTS ARE 2 GRAVE LOTS EXCEPT WHERE
 OTHERWISE NOTED.
 ALL 2 GRAVE LOTS ARE 6' x 9'
 ALL 3 GRAVE LOTS ARE 9' x 9'
SECTION 10 350 2 GRAVE LOTS 33 3 GRAVE LOTS
SECTION 11 175 2 GRAVE LOTS
SECTION 12 249 2 GRAVE LOTS 15 3 GRAVE LOTS

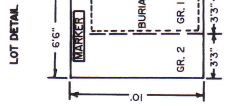
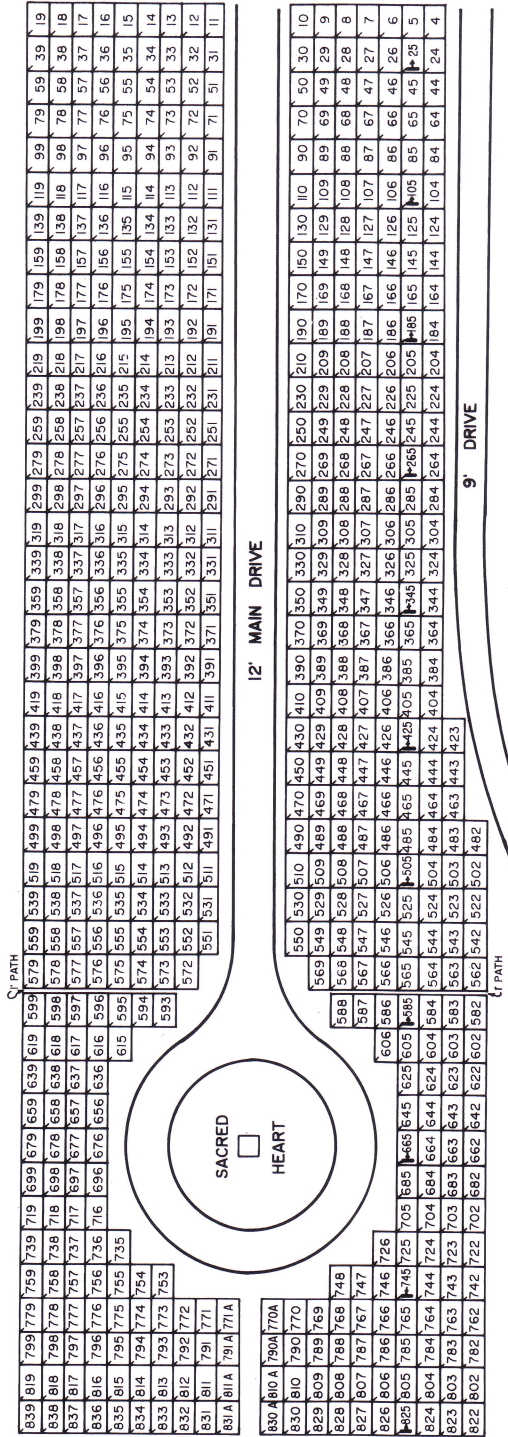
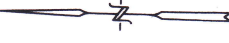
SECTION 11

SECTION 12

SECTION 10

MAIN DRIVE

**HOLY TRINITY
 MAUSOLEUM**



NOTE:

- THE LOT NUMBER IS PLACED IN THE UPPER RIGHT CORNER OF THE LOT AS YOU FACE THE LOT AND IS INDICATED THIS WAY
- LOCATION OF GR. MARKER SHOWN THIS WAY
- ARROW INDICATES DIRECTION GRAVE MARKERS WILL FACE.
- ALL LOTS ARE 2 GRAVE LOTS EXCEPT WHERE OTHERWISE NOTED.
- ALL 2 GR. LOTS ARE 6'-6" X 10'
- ALL GRAVES ARE 3'-3" X 10'
- LOT SUMMARY:
- 642 2 GR. LOTS

HOLY TRINITY CEMETERY
 AVON, OHIO
 JAYCOX ROAD
 WHOLE PART

SCALE: 1" = 20' BT: J.G. AUG. 7, 1982